



# PEAKS AND VALLEYS

## DISTRICT NEWS

### STAY CONNECTED



of restrictions on the number of people who can gather physically, social media enables us to maintain or regain connection with one another. Families, friends, pastors and church members can stay connected!

So use the technology of social media. Use the telephone to connect and serve your neighbor. Use whatever means you have at your fingertips to “bear one another’s burdens” (Gal. 6:2).

Connect with family, friends and church members whether they are at home, in the hospital, a skilled care unit or other care facility. Use whatever technology you and they have available. Although you may not be able to personally connect with some, most have the capability to speak by phone at a minimum. Who do you know that you could encourage? Who needs comfort? Who is lonely? Who has been disconnected from your congregation? Who desires to hear a word of hope? Who needs to hear the Gospel?

I encourage you to use this time of social distancing to connect or reconnect with others. It’s one way that you can carry out the third part of the district focus — *Live the Faith.*

God’s Word calls us to love our neighbor. At a time such as this, technology greatly helps us.

Through the telephone and social media, you have the opportunity to bring God’s blessings to others and close the gap created by social distancing!

**In Christ’s love and service,**  
**Rev. Roger Schlechte**  
rschlechte@rm.lcms.org

*(Note: In light of current events, President Schlechte’s original message written in early March is replaced with a timely message of encouragement.)*

#### **Greetings to you in the name of Jesus, our suffering, yet victorious Lord and Savior!**

**S**OCIAL DISTANCING, a new term for our vocabulary, rings countless times in our ears daily. How quickly everyone has come to know and understand the meaning of the phrase.

You may be familiar with reports that social media creates “social distance.” While Facebook, Twitter, Instagram, Snapchat and other platforms have been means to connect and reconnect with others, they have created distance in other ways. Social media can take the place of physically gathering with others. You’ve seen families and others in a restaurant dining together, yet each individual pays more attention to his or her device rather than engaging in conversation with those present.

Yet these forms of communication enable us to exchange information with others, and to connect with people who we otherwise could not because of physical distance. In the current environment



**Rev. Roger Schlechte**  
District President

# District Convention canceled

Due to the COVID-19 pandemic, the Lutheran Women's Missionary League (LWML) Rocky Mountain District has decided to cancel the 2020 convention scheduled for June 5-7 at Keystone Resort, Colorado. The safety of our attendees and the resort staff are very important to us and gathering in large groups is not advisable at this time.

The LWML Rocky Mountain District will continue to conduct business, including voting for mission grants. More information is available at [lwmlrmd.org](http://lwmlrmd.org).

With the generous support of the Rocky Mountain District LWML groups that faithfully gather mite offerings, we have paid



our 2018-20 mission grants in full. Please continue to support the ministry of the LWML Rocky Mountain District through your prayers and continued mite offerings. Visit the website for information on how to donate.

The women of the LWML Rocky Mountain District continue to serve others as they are able during these unusual times. We are continuing to pray and engage in Bible study. Many of our women are using their skills to make masks or other items to care for and encourage their communities.

**Debbie Yocky**  
President, LWML Rocky Mountain District

## LCMS resources for COVID-19 available

The Lutheran Church—Missouri Synod has a webpage with resources to help congregations and members navigate the COVID-19 pandemic at [lcms.org/coronavirus](http://lcms.org/coronavirus).

The page was recently updated with a conversation between Rev. Dr. Matthew C. Harrison, LCMS president, and James Sanft, president

and chief executive officer of Concordia Plan Services, regarding the Small Business Administration loans, especially the Payroll Protection Program, that can benefit LCMS congregations, schools and other agencies.

The page also has prayers, devotions, study-aids and more.

## Share the Gospel in another language!



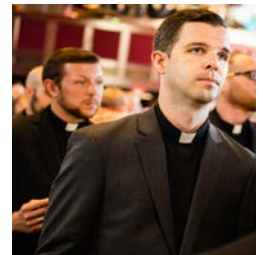
The Lutheran Heritage Foundation (LHF), an LCMS Recognized Service Organization, has free resources for you and your congregation for sharing the Gospel with neighbors and friends who don't speak English as a first language. Luther's Small Catechism, devotional books, children's Bible storybooks and more are available in more than 100 languages. They also make excellent gifts when going on short-term mission trips!

To search LHF's publications database, visit [lhfmissions.org/publications](http://lhfmissions.org/publications).

## DISTRICT CALLS/CHANGES

### Calls extended

- ▶ **Rev. Edward**, Bethany/Our Savior, Pueblo/Pueblo West, Colo., from First, Knoxville, Tenn.
- ▶ **Rev. Roger Wohletz**, Christ, Denver, Colo., from First, Salida, Colo.
- ▶ **Heather Anderson**, Grace, Sandy, Utah, from Messiah, Grand Junction, Colo.
- ▶ **Rev. David Buss**, Trinity, Baton Rouge, La., from Rocky Mountain District Board of Directors, to be executive assistant to the district president
- ▶ **Sara Grein**, Christ, Overland Park, Kan., from Trinity, Fort Morgan, Colo.



### Calls accepted

- ▶ **Michael Brandon**, LCMS International Missions; Concordia International School-Shanghai from Immanuel, Albuquerque, N.M.
- ▶ **Rev. David Dyer**, Castle Rock, Colo., candidate status, from Bethlehem, Lakewood, Colo., as associate pastor
- ▶ **Thomas Hinrichs**, Christ, Albuquerque, N.M., from St. Peter, Macomb, Mich.

### Calls declined

- ▶ **Rev. Benjamin Delin**, Our Savior, Pagosa Springs, Colo., from Redeemer, Bloomington, Minn.
- ▶ **Rev. Kyle Winter**, The Church at Creston, Kalispell, Mont., from First, Salida, Colo.

# Support Bethesda staff, clients with notes and cards

Bethesda Lutheran Communities is safe and sound in residential service locations, and following all safety guidelines given by the CDC.

Bethesda could use your help to add cheer and encouragement in the midst of uncertainty. Bethesda in Colorado currently supports roughly 250 adult individuals with intellectual and developmental disabilities. Please consider sending a written note or greeting card to be shared with a Bethesda direct support professional (care staff) or a person we support.

- ▶ Do not go out to purchase a card.
- ▶ Use what you have available to you.
- ▶ It could be fun to get a leftover Valentine or Christmas card in the midst of this crazy time.
- ▶ Include a Bible verse and encouraging words.
- ▶ Make a card or draw a picture.

- ▶ Get children involved.
- ▶ Whatever is sent will be appreciated.

Bethesda regional offices will share cards with direct support professionals and the people they support. Please invite others to join us as well!

Send to:

Bethesda Lutheran Communities  
c/o A person we support  
or  
c/o A Direct Support Professional  
5941 Middlefield Road, Suite 100  
Littleton, CO 80123

Or send to any Bethesda regional office in the United States.

Thank you for your kindness during these extraordinary times. Any questions or comments regarding Bethesda can be directed to Sue Hart, DCE, regional ministry leader at [Susan.Hart@BethesdaLC.org](mailto:Susan.Hart@BethesdaLC.org).

# Bethesda offering scholarships

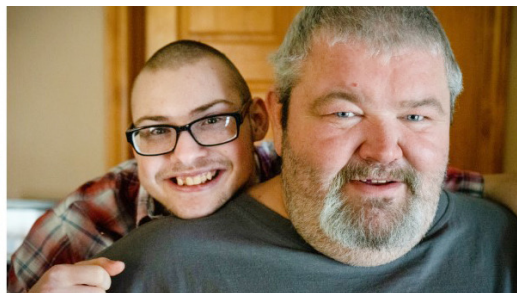
A total of \$30,000 will support individuals who plan to enhance the lives of people with intellectual and developmental disabilities.

The Bethesda Auxiliary, in partnership with Bethesda, is offering \$30,000 in student scholarships for the 2020-21 school year. The scholarships are for undergraduate or graduate students, including seminarians.



“We’re pleased to support young men and women who hope to put their talents and energy toward enhancing the lives of people with intellectual and developmental disabilities,” said Karen Carter, Bethesda Auxiliary president. “Furthering the achievements of students who have a shared interest in supporting the Bethesda mission helps us all. It’s gratifying to be able to empower these students in such a direct way.”

The deadline to apply is May 15, with results to be announced by July 1. For more information and to download an application, go to [BethesdaLC.org/get-involved/scholarships](https://BethesdaLC.org/get-involved/scholarships).



# Share your news with us!

We are always in need of more submissions for *Peaks and Valleys*. Why should you send them in? It helps remind us of what God is doing around the Rocky Mountain District. It is also a way to share ideas for nurturing those God has already gathered into His church and for reaching those still outside of the flock with the Good News about Jesus. It finally reminds each of us that Christ’s Church is much larger than just our particular congregation.

We welcome pictures and stories of congregational events, youth events, outreach events, installations, events from your men’s or women’s group, servant

events, conferences, anniversaries, church renovations or additions, and much more. If you would like an upcoming event publicized, please make sure we have the information at least two months in advance.

Please send submissions to Jan Hoener at [communications@rm.lcms.org](mailto:communications@rm.lcms.org). You may also mail your submissions to Jan at 5446 Knoll Place, Highlands Ranch, CO 80130.

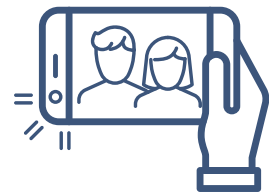
Please ensure photos sent electronically are high resolution.

**The deadline for the August issue is June 15.**



Got a smartphone?

## Show us what your church life looks like!



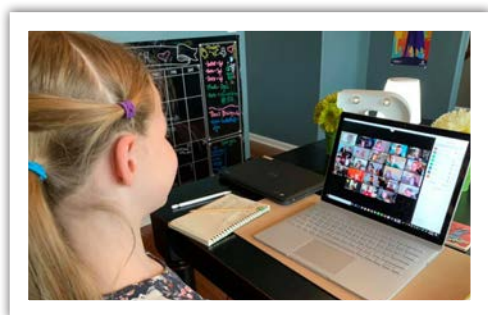
As we navigate our present normal, we are thankful that we still have opportunities, at home via the internet, to hear God's Word preached to us by our pastors. And our Lutheran school students can also be in class, albeit on a computer screen.

So, what does this look like for you? Please snap a quick photo or two ... it could be of you and/or your family in your living room or at a table watching the worship service on the computer or your big screen TV; or your student (or a teacher) at her desk, working or looking into a screen of her classmates in rows of rectangles. Or if you are one of the few souls in church helping with the livestream, capture a scene.

Let us know who and where you are and where you worship, and we'll use them to show that while we're physically apart, we're still together as the Body of Christ.

Please send your photos and, if possible, stories to Jan Hoener at [communications@rm.lcms.org](mailto:communications@rm.lcms.org)

Here are sample photos to use as a guide.



Student joins her class for online lessons.



Third-grade teacher leading her online class in song, with help from her son.



▲ Family watching Sunday service from the comforts of their sofa.



Children visiting their grandmother, through the window of the nursing home.

◀ Following along with worship on the radio.



◀▶ Praising God outside in the lovely spring days, either through music or a chalk drawing.

